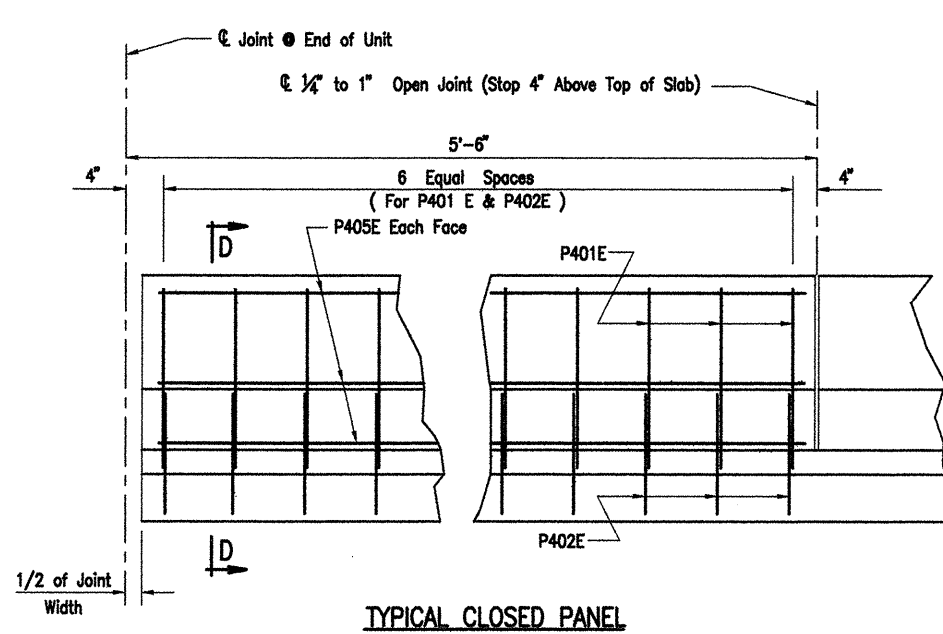
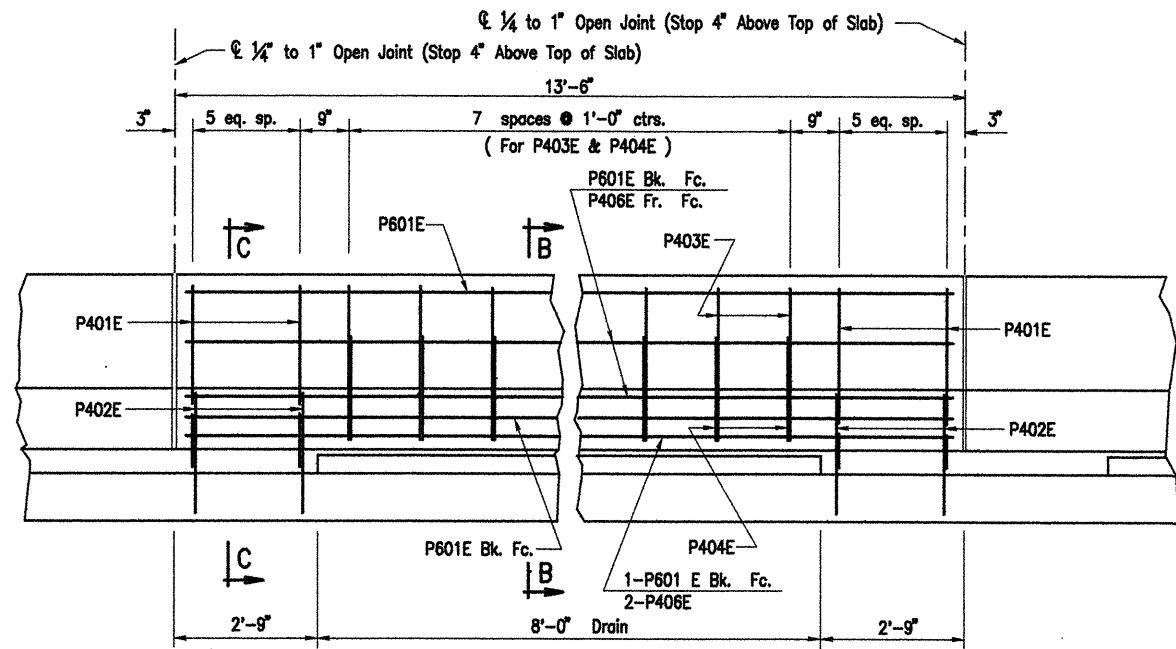


COMPANY\1999 JOBS\99-044 AHTD\WHITERIVER\JOB 110394\368parapet8alt1 ACAD SCALE: 6"=1'-0"



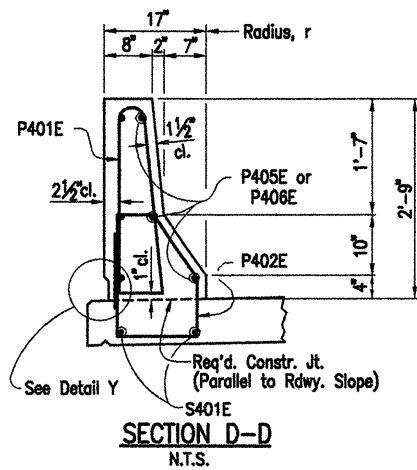
TYPICAL CLOSED PANEL



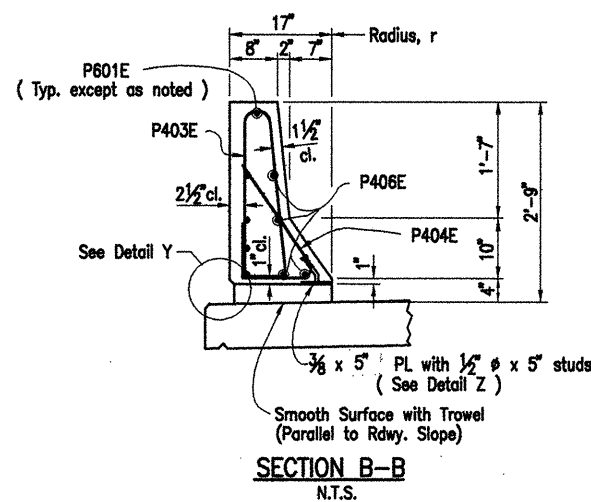
TYPICAL OPEN PANEL

ELEVATION OF TYPICAL PARAPET RAIL

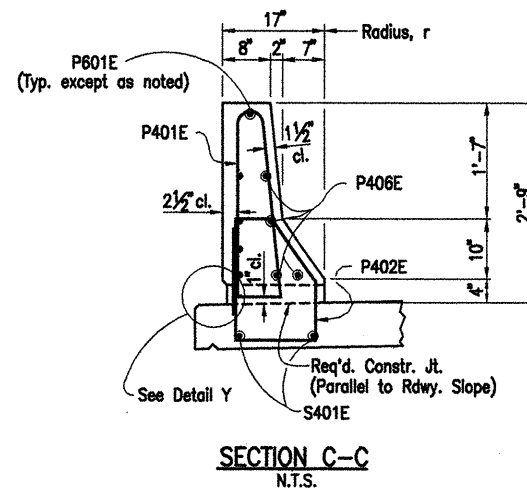
(As viewed from roadway side of parapet)
N.T.S.



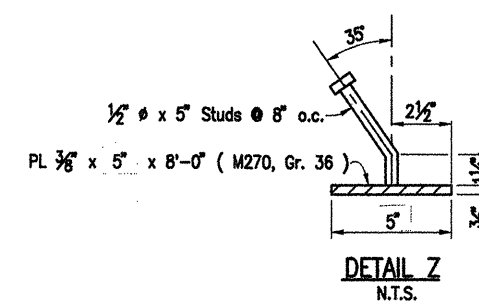
SECTION D-D
N.T.S.



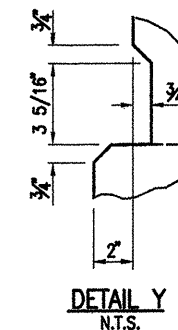
SECTION B-B
N.T.S.



SECTION C-C
N.T.S.



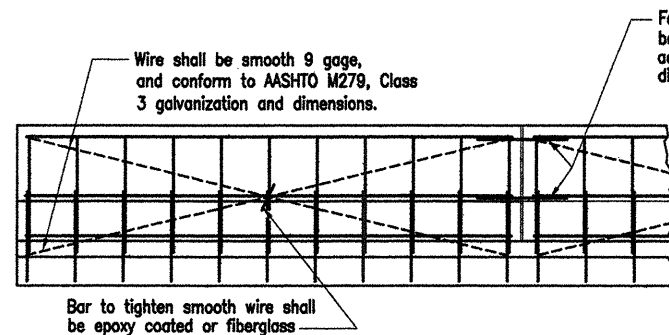
DETAIL Z
N.T.S.



DETAIL Y
N.T.S.

Note:

The surfaces of the 3/8" Plates which will not be in contact with concrete shall be painted with aluminum epoxy paint in accordance with Section 638 or as approved by the Engineer. Only one coat is required and shall be applied in the fabricator's shop. Painting will not be paid for directly, but will be considered subsidiary to Structural Steel or Class S (AE) Concrete.

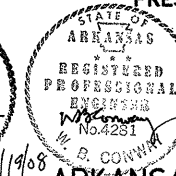
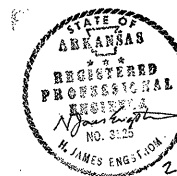


DETAILS OF OPTIONAL SLIPFORMING OF CONCRETE PARAPET RAIL (OPEN OR CLOSED)

N.T.S.

All smooth wire bracing shall be placed on the inside faces of the reinforcing

The extruded parapet shall conform to the horizontal and vertical lines shown on the plans or as directed by the Engineer and shall present a smooth, uniform appearance and texture.



ALTERNATE NO. 1
WHITE RIVER BRIDGE APPROACHES
DETAILS OF 368'-0" CONT.
PRESTRESSED CONCRETE GIRDER UNITS
(SHEET 5 OF 7)

WHITE RIVER STR. & APPRS.
(CLARENDON) (PH. II) (F)
MONROE COUNTY

ROUTE 79 SEC. 13
ARKANSAS STATE HIGHWAY COMMISSION
LITTLE ROCK, ARK.

Engstrom/Modjeski and Masters, Inc.

DRAWN BY: GPT DATE: Nov. 07 FILENAME: b11039412_s05
CHECKED BY: YO DATE: Nov. 01 SCALE: 6" = 1'-0"
DESIGNED BY: GPT DATE: Nov. 01
BRIDGE NO. 06830 DRAWING NO. 42005